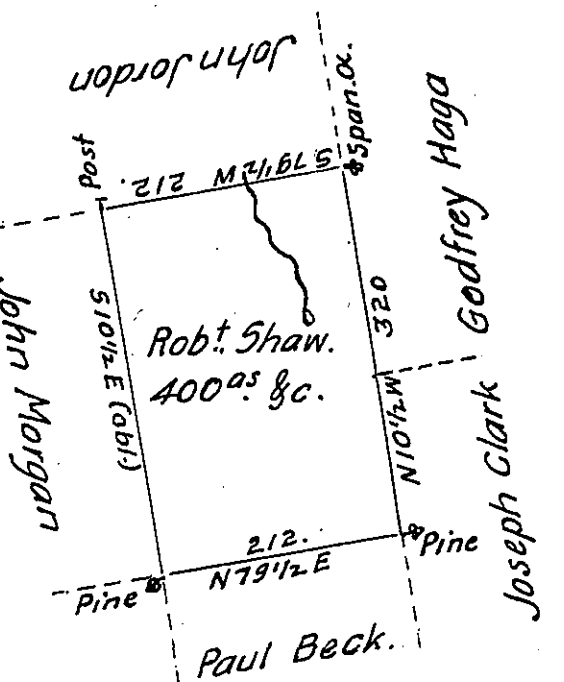


Hazle
Luzerne
(see Page 143)



A Draft of a tract of land Called _____ Situate on the Waters of Black
Creek in the County of Northum^d. or Northampⁿ. Containing four Hundred acres
and allowance Surveyed for Robert Shaw the 19th day of October 1793 by Virtue
of a Warrant dated the 10th day of July 1793.

To

by W^m. Gray D.S.

Daniel Brodhead Esq. }
Surv^r. Genl. }

IN TESTIMONY that the above is a copy of the original remaining on file in
the Department of Internal Affairs of Pennsylvania, made
conformably to an Act of Assembly approved the 16th day of
February, 1833, I have hereunto set my Hand and caused
the Seal of said Department to be affixed at Harrisburg,
this fourth..... day of December..... 1906

Leaac R. Johnson
Secretary of Internal Affairs.